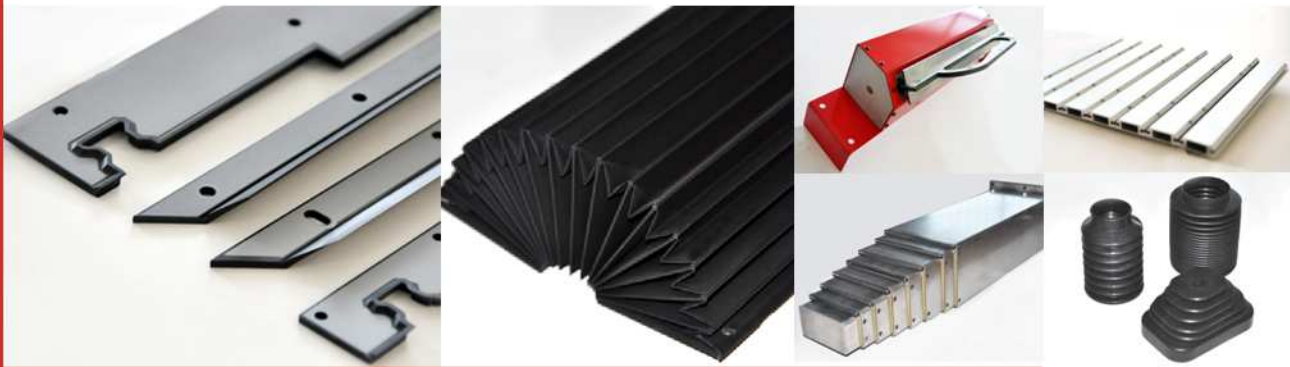


Main Catalogue

thodacon[®]
Machine Tool Protection



BEST CHOICE for machine tool protection

Thodacon Machine Tool Protection



Index

Company Introduction	3
<hr/>	
Bellow Covers	4
Roller Covers	8
Steel Covers	14
Apron Covers	16
Moulded Bellows	18
Rubber Disk Bellows	20
Pit Covers	22
Applications	23
Way Wipers	24
Cylinder Wipers	26

Company Introduction

Best Choice for Machine Tool Protection

thodacon

Werkzeugmaschinenenschutz GmbH

Albert-Schalper-Str. 25
83059 Kolbermoor, Germany
Tel: +49 (0)8031-22205-71

thodacon

Machine Tool Protection Co., Ltd.

Baojian Industrial Zone, Building 1, Luoshe
Wuxi 214154, China
Tel: +86 510 8329 1518



By using your protection parts, you will be able to experience the quality and long duration, brought to you by Thodacon.

Thodacon as a global player unifies the whole process chain of all its products under one organisation and offers the following advantages:

- Own R&D department ensures a state of the art technology.
- Own Design and customer service.
- Production with a high vertical range of manufacturing for all Thodacon products.
- Located in Europe (Germany) and Asia (China).
- Represented global far.
- Global call off warehouse and own logistics enables deliveries to each global location within 3 – 5 days.
- ISO 9001:2008 certified. *

* Plant Asia

Bellow Covers

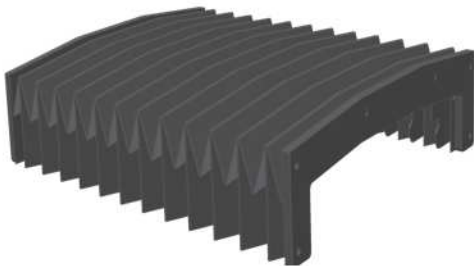
Products Series: Finned Bellow Covers / Regular Bellow Covers



- Smooth running
- Dust protection
- Stainless steel based on your requirements.
- Good stability. For finned bellow covers, excellent durability with high resistance to water, oil, dust.

The bellow covers are designed with regular and irregular surface construction, which aim at protecting important precision transmission parts with less shavings and chips generation. Typical applications include linear guideways or box guideways. They may prevent guideways from being damaged by external forces or pollution and help reduce drag force by parts movement. Thodacon components are made to increase machines lives and to reduce the possibility of machines crashing.

All the materials we use for bellow covers are of high quality. According to various working conditions, we provide various cover materials to choose from.



Inquiry Form for Bellow Covers



Your Company Contact

Place/Country Telephone

Email Telefax

Working position: Horizontal Vertical Frontal

Use of bellow: Outside Inside

Temperature range: _____

Stroke (mm): _____

Max. speed (m/min): _____

Max. acceleration (m/s²): _____

Working hour per day (h): _____

		Permanently	Sporadically
<input type="checkbox"/> Chips (which kind)	_____	<input type="checkbox"/> Water	<input type="checkbox"/>
<input type="checkbox"/> Chips amount (kg/m ²)	_____	<input type="checkbox"/> Dust	<input type="checkbox"/>
<input type="checkbox"/> Chip temperature	_____	<input type="checkbox"/> Coolant	<input type="checkbox"/>
<input type="checkbox"/> Other	_____		

Desired shape: _____ (refer to page 7)

Quantity required: _____ units

Desired cover material: _____ (refer to page 13)

Desired end-frame material: Steel Alu PVC Stainless steel

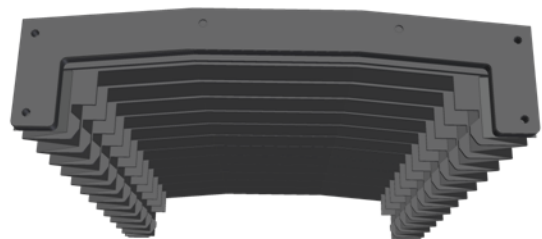
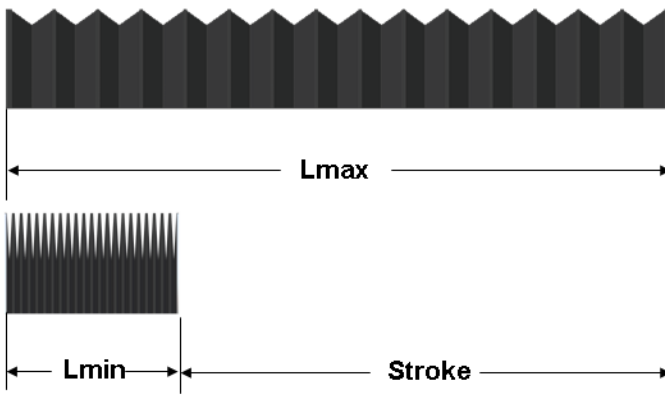
Extension Lmax = _____ mm Bellows height, right D= _____ mm

Compression Lmin = _____ mm Bellows height, left E= _____ mm

Bellows height A = _____ mm Glide shoe, right F= _____ mm

Bellows width B = _____ mm Glide shoe, left G= _____ mm

Fold width C = _____ mm



Inquiry Form for Finned Bellow Covers

Your Company Contact

Place/Country Telephone

Email Telefax

Working position: Horizontal Vertical Frontal

Use of bellow: Outside Inside

Temperature range: _____

Max. speed (m/min): _____

Max. acceleration (m/s²): _____

Working hour per day (h): _____

	Permanently	Sporadically
<input type="checkbox"/> Chips (which kind) _____	<input type="checkbox"/>	<input type="checkbox"/>
<input type="checkbox"/> Chips amount (kg/m ²) _____	<input type="checkbox"/>	<input type="checkbox"/>
<input type="checkbox"/> Chip temperature _____	<input type="checkbox"/>	<input type="checkbox"/>
<input type="checkbox"/> Other _____	<input type="checkbox"/>	<input type="checkbox"/>

Desired shape: _____ (refer to page 7)

Quantity required: _____ units

Desired cover material: _____ (refer to page 13)

Desired end-frame material: Steel Alu PVC Stainless steel

Extension Lmax = _____ mm

Bellows height, right D= _____ mm

Compression Lmin = _____ mm

Bellows height, left E= _____ mm

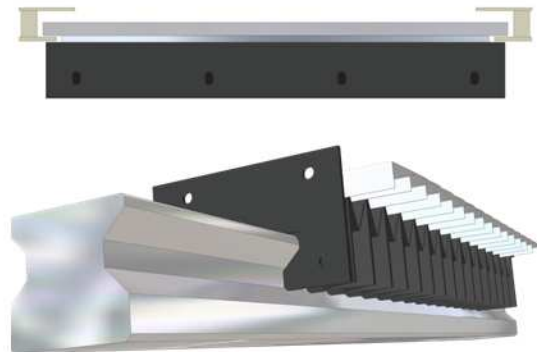
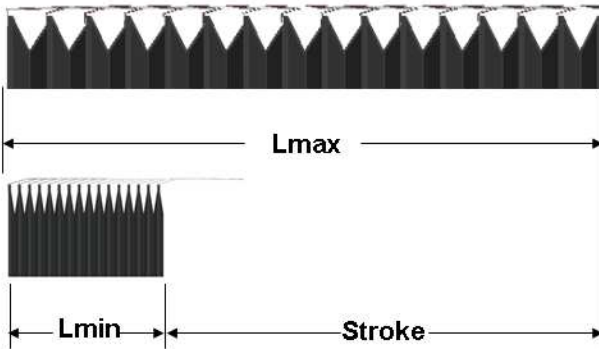
Bellows height A = _____ mm

Glide shoe, right F= _____ mm

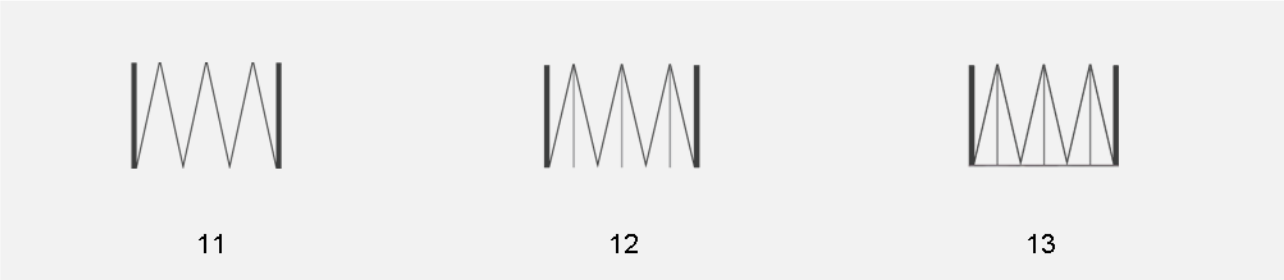
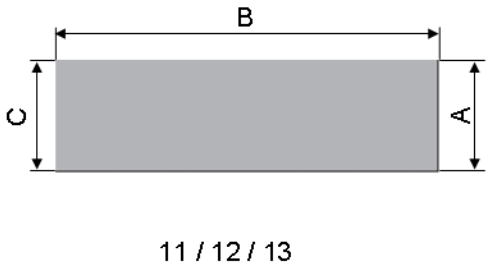
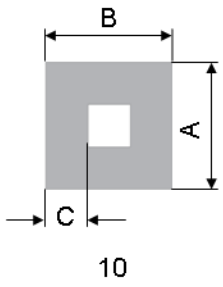
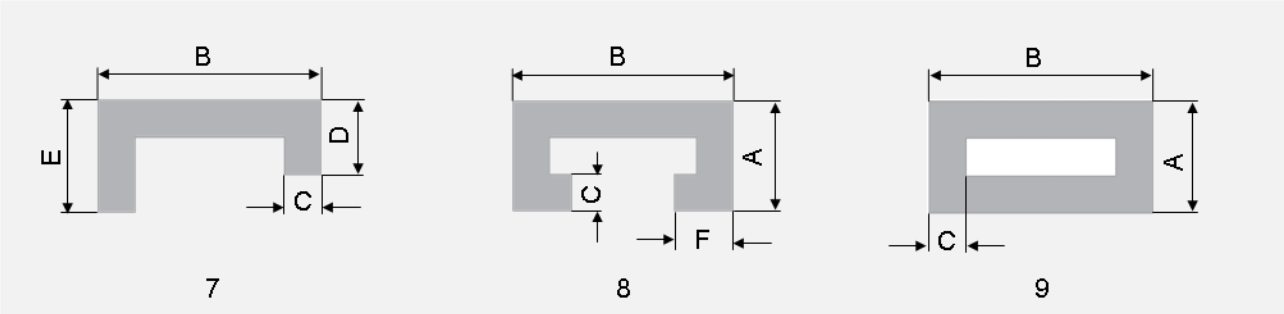
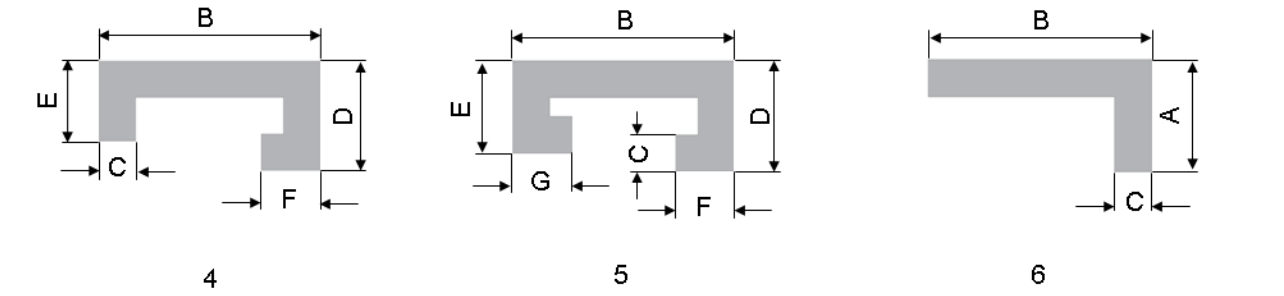
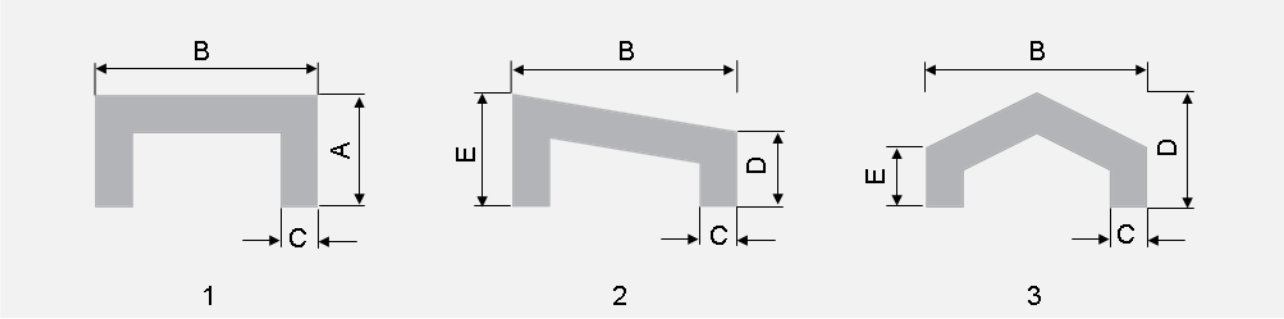
Bellows width B = _____ mm

Glide shoe, left G= _____ mm

Fold width C = _____ mm



Bellow shape



Roller Covers



- New fashion design
- Easy to install
- For small space requirements
- Long durability
- High dynamic requirements

Thodacon's Roller Covers are elaborated parts.

All used materials are developed for the special requirements of machine tools.

The huge field of applications in the machine tool sector has been creating evolutionarily a big number of different solutions as well.

The grade of innovation makes the Thodacon roller covers the best choice for industrial purposes.



Inquiry Sheet

Roller type

Step 1



A

A = pure roller cover



B

B = with bearing pedestal



C

C = with housing

Housing type

Step 2



S

S = wiper position straight to band



F

F = wiper position flat to band



P

P = wiper position flat to band with Pulley

Mounting positions

Step 3



HO

HO = Horizontal Operation



FO

FO = Frontal Operation

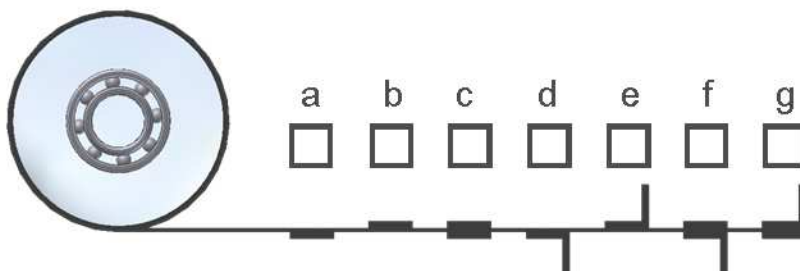


VO

VO = Vertical Operation

Attachment of the band

Step 4



Inquiry Sheet

Step 5

Connection plate



F1



F2



F3

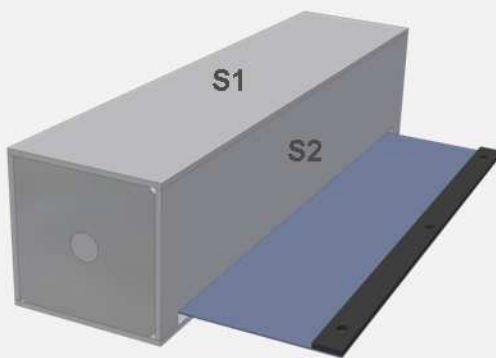


F4

*Four kinds of connection plates are available, further variations on request

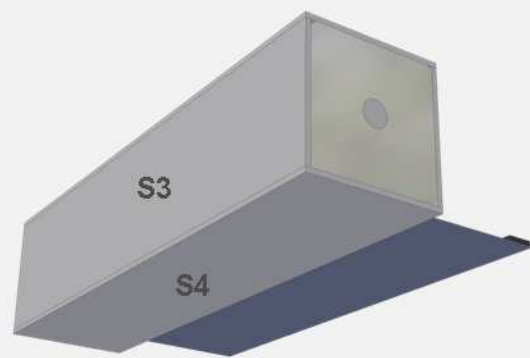
Step 6

Position of connection plate



S1

S2



S3

S4

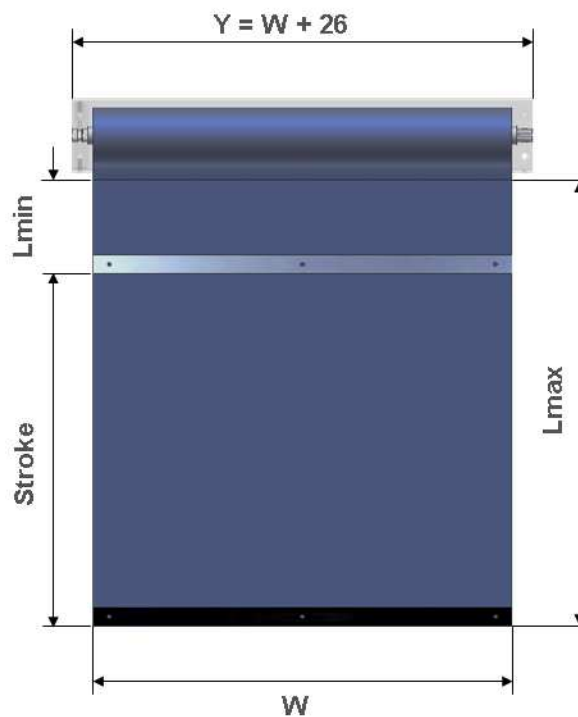
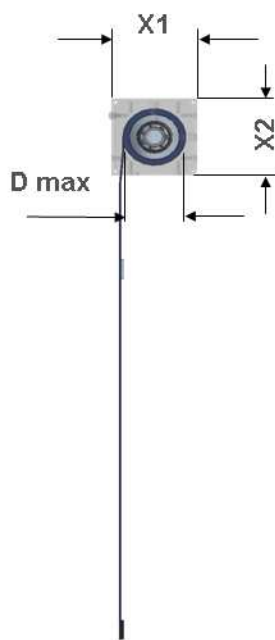
Inquiry Form for Roller Covers

Your Company Contact

Place/Country Telephone

Email Telefax

L min:	_____	mm	L max:	_____	mm
Stroke:	_____	mm	W:	_____	mm
X1:	_____	mm	X2:	_____	mm
D max:	_____	mm	Speed max:	_____	m/min
Acc. max:	_____	m/s ²	Quantity pb.	_____	pce
Quantity pa.	_____	pce			



Inquiry Form for Roller Covers

Your Company Contact

Place/Country Telephone

Email Telefax

L min: _____ mm L max: _____ mm

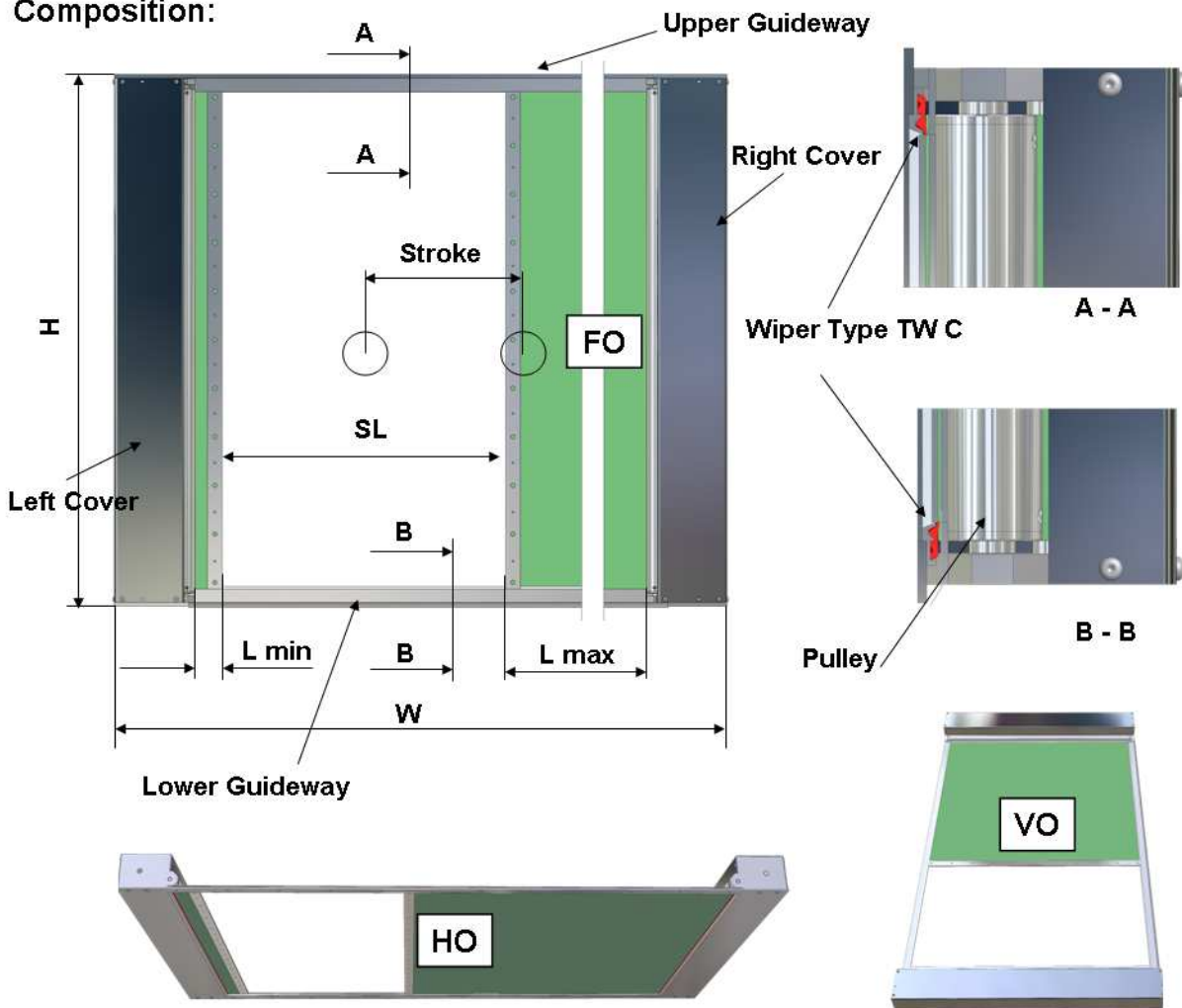
Stroke : _____ mm W: _____ mm

H: _____ mm SL: _____ mm

Speed max: _____ m/min Acc. max: _____ m/s²

Quantity pb. _____ pce Quantity pa. _____ pce

Composition:



Inquiry Sheet

Fabrics * **Step 7**

No.	Usage	Order No.	Front/middle/back	Color	Thickness (mm)	Width (mm)	Thermal Properties(°C)			Resistance to
							min	max	short-time	
01	R	1001414	PUR/PES/-	Glossy Black	0.9	2000	- 35°	+ 80°	+120°	Dust Oil Coolants Water
02	R	1001413	PUR/PES/-	Glossy White	0.9	2000	- 35°	+ 80°	+120°	
03	R	1004164	PUR/PES/-	Glossy Green	0.9	2000	- 35°	+ 80°	+120°	
04	R	1004170	PUR/PES/-	Glossy Green	1.5	2000	- 35°	+ 80°	+120°	
05	R	1002547	PUR/PES/PUR	Matt Black	0.34	1500	- 35°	+ 90°	+180°	Acids Oil Coolants Water
06	R/B	1003939	PUR/PES/PUR	Matt Black	0.21	1500	- 35°	+ 90°	+140°	
07	R/B	1003940	PUR/Nomex® /PUR	Matt Black	0.35	1500	- 35°	+ 120°	+230°	
08	R/B	1007493	PVC/PES/PVC	Glossy Black	0.26	1500	- 25°	+ 80°	+120°	Dust Water
09	R/B	1007492	PVC/PES/PVC	Glossy Black	0.5	2000	- 25°	+ 80°	+120°	
10	R	1001412	PVC/PES/-	Glossy Black	0.9	2000	- 25°	+ 80°	+120°	
11	R	1001411	PVC/PES/-	Glossy White	0.9	2000	- 25°	+ 80°	+120°	
12	R	1004184	PVC	Transparent	1.0	1500	- 25°	+ 80°	+100°	
13	R	1002471	FPM/PES/-	Matt Black	1.2	1200	- 40°	+120°	+200°	Acids Dust Oil Coolants Water Alkaline
14	R	1002547	Stainless Steel	Silver	0.25	600	- 40°	+ 100°	+300°	
15	R	1002667	Stainless Steel	Silver	0.2	1200	- 40°	+ 100°	+300°	

* Survey of main fabrics for usage: R (Roller Covers), B (Bellow Covers)

All dimensions in "mm"

Complete Inquiry Information Sheet



Example



Steel Covers

Inquiry Form for Steel Covers

Your Company Contact

Place/Country Telephone

Email Telefax

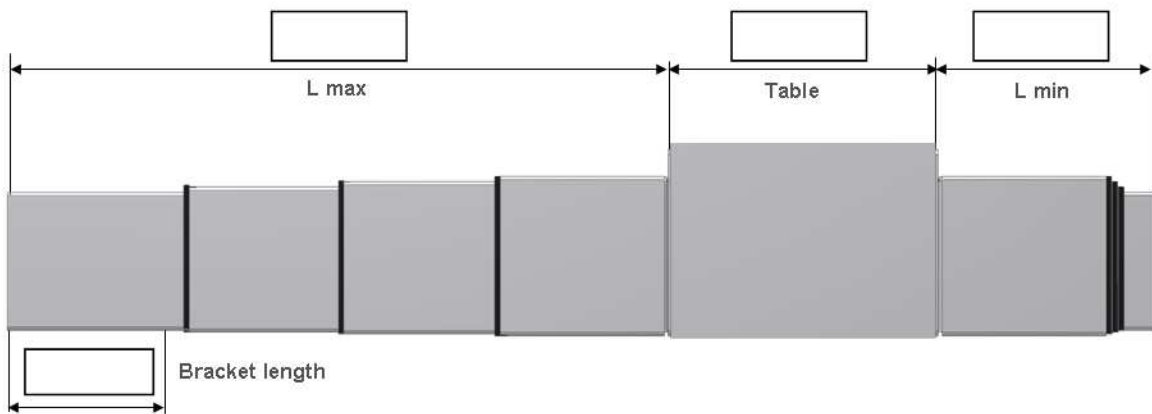
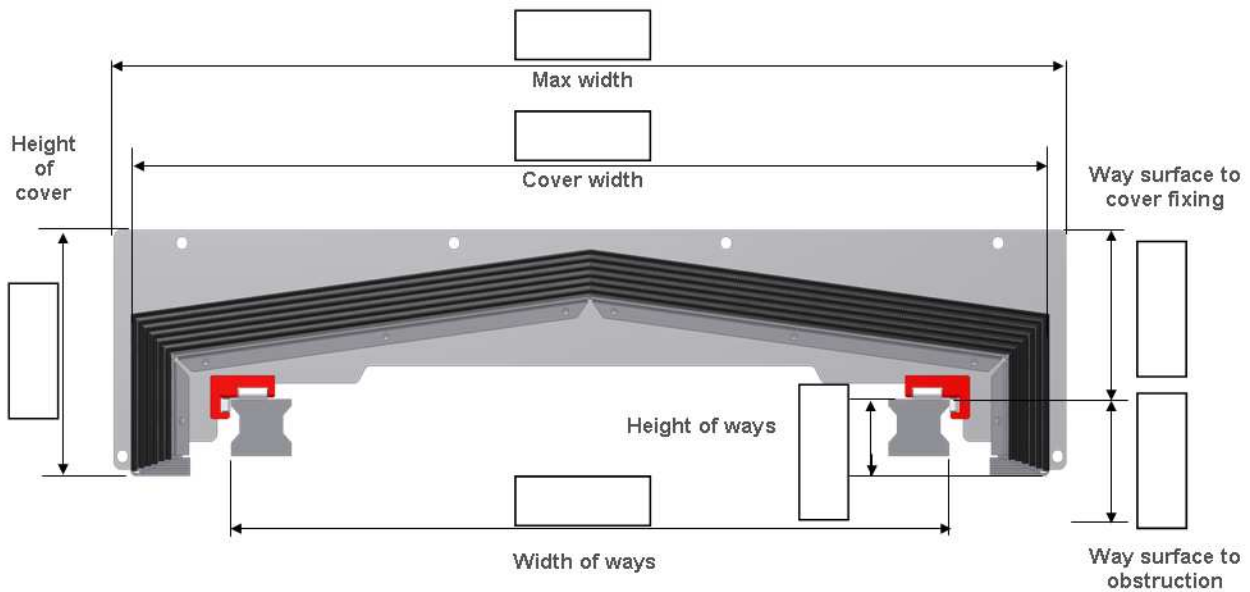
Working position: Horizontal Vertical Frontal
 Use of cover: Outside Inside Dry usage Regular usage

Stroke (m/min): _____

Max. speed (m/min): _____

Max. acceleration (m/s²): _____ Working hour per day (h): _____

Material: Regular Stainless

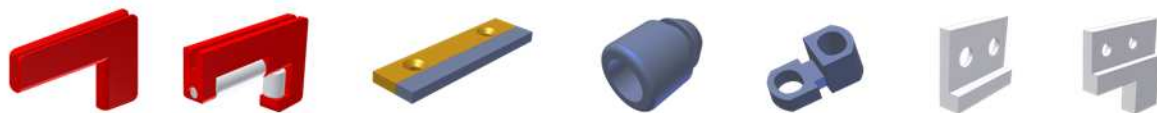
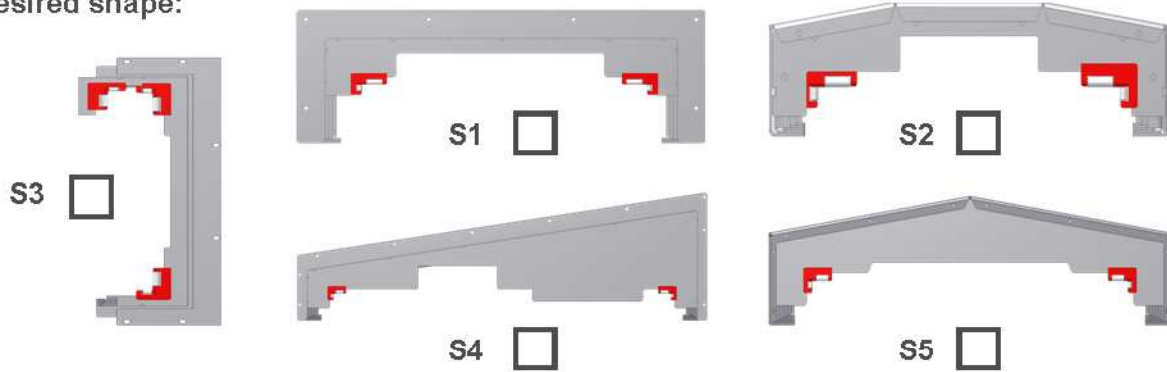


Note: If other obstruction to obstruct the cover design, please add sketch in the drawing

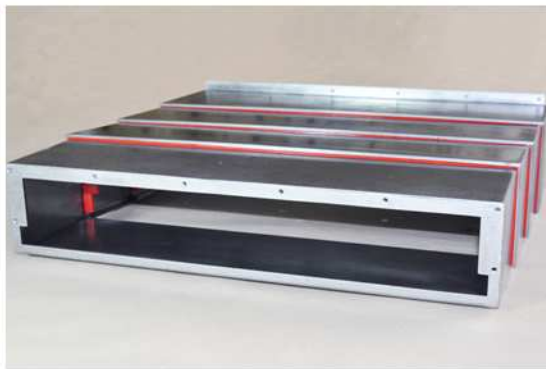
Steel Covers

Inquiry Form for Steel Covers

Desired shape:

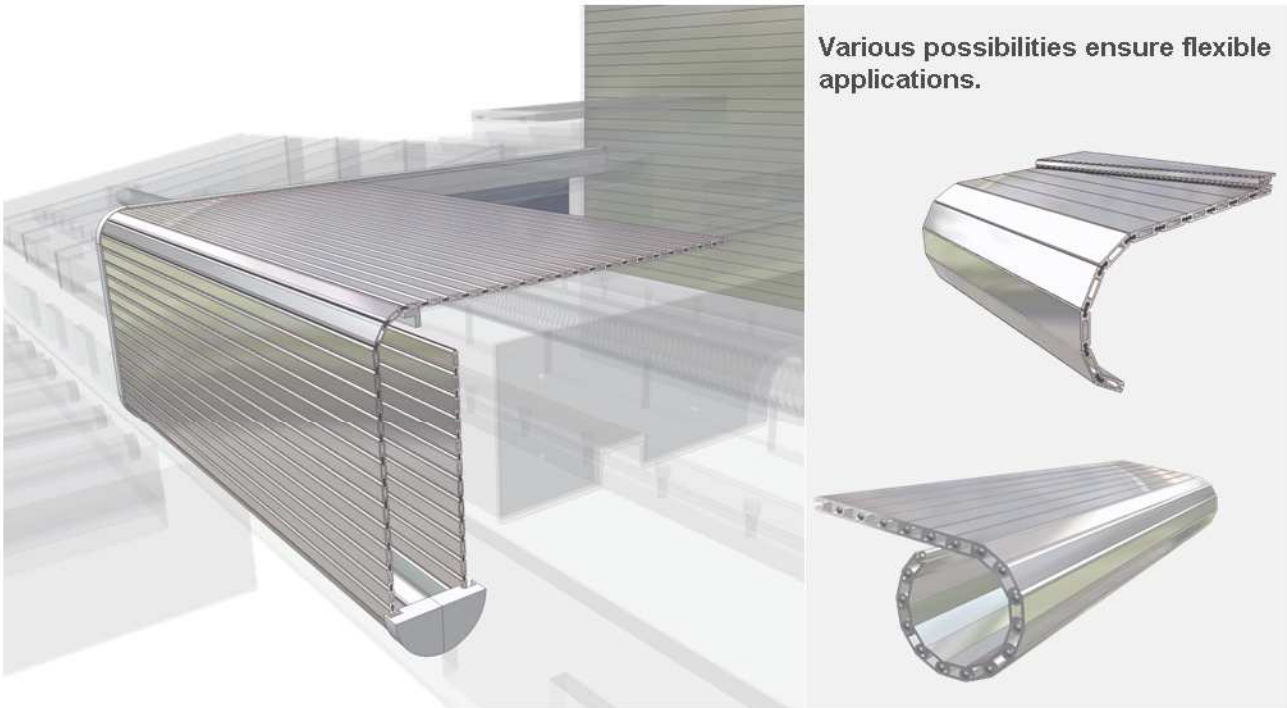


A big range of accessories are available. For further information see our catalog "Way Wipers".



Aluminium Link Type Covers

ALC Covers, waterproofed for high speed using, up to 200 m/min and 15 m/s²



ALC R - easy to fold in two directions



ALC - in combination with roll-aways



ALC F - easy to combine with Thodacon Wipers

ALC Covers are a special development for high speed machine tools.

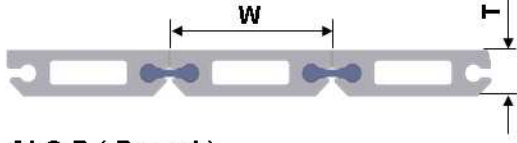
The very stable hollow aluminium profiles are quite light (8 kg/m²). For chip protection and a professional appearance, the surface is hard anodized. The polyurethane hinge is adequate for a high permissible tensile stress (90 Pa).

For very big covers (up to 6000 mm height) the internal strength of the aluminium profiles (335 Pa) will ensure the best properties during a long life cycle.

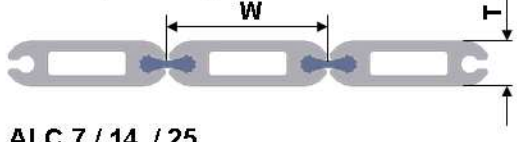
Available are single covers as well as integrated systems including guide tracks.

Inquiry Sheet

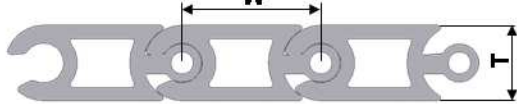
ALC F / 8 (Flat)



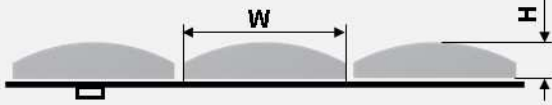
ALC R (Round)



ALC 7 / 14 / 25



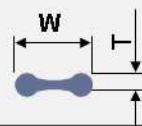
ALC L to be riveted on fabrics



ALC EP (End Pieces)



ALC Hinge

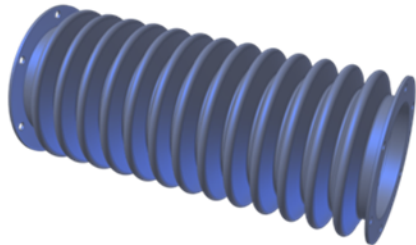


Technical Information

Type	Mat No.	Material	W	T	H	S	Length	Coating
ALC F	1002093	Alu	20.8	5.5	-	-	1000	anodized
	1000039	Alu	20.8	5.5	-	-	3000	anodized
ALC R	1001530	Alu	20.5	5.5	-	-	1000	anodized
	1000040	Alu	20.5	5.5	-	-	3000	anodized
ALC 7	1043623	Alu	18.2	7	-	-	1000	anodized
	1035591	Alu	18.2	7	-	-	3000	anodized
ALC 8	1023969	Alu	25	8	-	-	1000	anodized
	1008839	Alu	25	8	-	-	2500	anodized
ALC 14	1004392	Alu	25	14	-	-	1000	anodized
	1003223	Alu	25	14	-	-	3000	anodized
ALC 25	1006251	Alu	50	25	-	-	1000	anodized
	1003251	Alu	50	25	-	-	3000	anodized
ALC L	1006252	Alu	16	1.5	3.5	-	1000	anodized
	1005424	Alu	16	1.5	3.5	-	3000	anodized
ALC EP F	1003330	Alu	25	5.5	-	-	1000	anodized
	1000828	Alu	25	5.5	-	-	3000	anodized
ALC EP A	1003331	Alu	20	5.5	30	3	1000	anodized
	1000785	Alu	20	5.5	30	3	3000	anodized
ALC Hinge	1000041	PU	7.1	2.1	-	-	endless	-

Moulded Bellows

Customized solutions and cover-materials are available on your demand



Moulded bellows are primarily used for protecting lead screws, precision shafts, moving air cylinders, various round shafts and irregular-shape parts. Its outstanding features include resistance to water, oil, temperature and chemicals. Various mounting types are offered to select from. Any other requirements can be made according to drawings. Various shapes can be made, such as square, elliptical and other shapes.

Material: *

No.	Type of material	Thermal Properties °C		Hardness range Shore A	Material Resistance to
		min	max		
01	NBR	-30°C	+110°C	40 — 75	Gasoline, Mineral Oil
02	FPM	-20°C	+200°C	40 — 75	Gasoline, Mineral Oil, Acids, Lyes, Water, Weathering and Ozone, Air Impermeability
03	CR	-35°C	+100°C	40 — 75	Weathering and Ozone
04	EPDM	-50°C	+130°C	40 — 75	Acids, Lyes, Water, Weathering and Ozone
05	VMQ	-65°C	+200°C	40 — 75	Weathering and Ozone, Steam

* Survey of main elastomers, further types on request



Inquiry Form for Moulded Bellows

Your Company Contact

Place/Country Telephone

Email Telefax

Working position: Horizontal Vertical

Use of bellows: Outside Inside

Temperature range: _____

Max. speed (m/min): _____

	Inside	Outside	Permanently	Sporadically
<input type="checkbox"/> Dust	<input type="checkbox"/>	<input type="checkbox"/>	<input type="checkbox"/>	<input type="checkbox"/>
<input type="checkbox"/> Water	<input type="checkbox"/>	<input type="checkbox"/>	<input type="checkbox"/>	<input type="checkbox"/>
<input type="checkbox"/> Oil/Grease	<input type="checkbox"/>	<input type="checkbox"/>	<input type="checkbox"/>	<input type="checkbox"/>
<input type="checkbox"/> Acid	<input type="checkbox"/>	<input type="checkbox"/>	<input type="checkbox"/>	<input type="checkbox"/>
<input type="checkbox"/> Leaches	<input type="checkbox"/>	<input type="checkbox"/>	<input type="checkbox"/>	<input type="checkbox"/>
<input type="checkbox"/> Others	<input type="checkbox"/>	<input type="checkbox"/>	<input type="checkbox"/>	<input type="checkbox"/>

Quantity required: _____ units

Material: _____ (refer to page 18)

Stem (shaft) Diameter: _____ mm

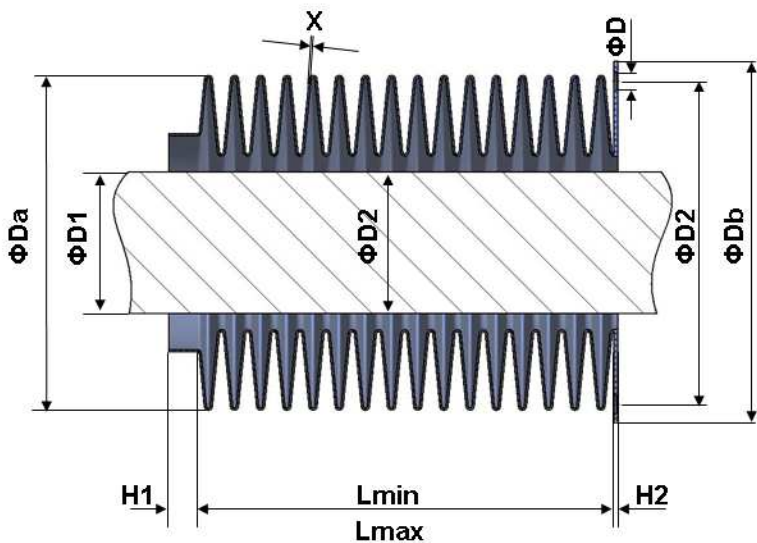
Lmax _____ mm ΦDa _____ mm

Lmin _____ mm ΦDb _____ mm

X _____ mm $\Phi D1$ _____ mm

H1 _____ mm $\Phi D2$ _____ mm

H2 _____ mm ΦDi _____ mm



Type A



Type B



Type C



Type D



Rubber Disk Bellows

Customized solutions and cover-materials are available on your demand.



Typical applications

- Mechanical engineering
- Hydraulic and pneumatic bars
- Pistons and spindles
- Measuring machines

Thodacon's rubber disk bellows are of high grade and always the best choice for industrial purposes.

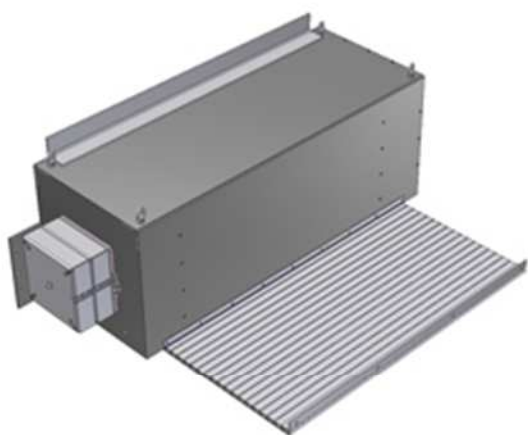
The bellow can be produced without mold cost and are an economical solution for lower quantities.

The bellow has a good relation between L min and L max. This and availability of different materials for different purposes offer an interesting technical option as well.

Different disc sizes and different collar or flange shapes allow the production of a virtual unlimited number of variations. More shapes and designs are available to order. Please send us your request, and we will reply as soon as possible.

Pit Covers

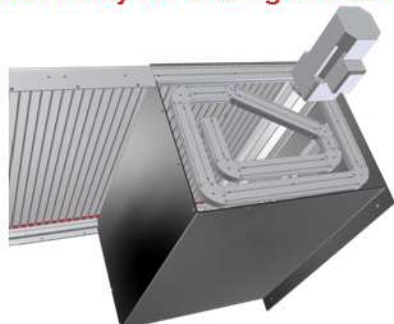
Customized solutions and cover-materials are available on your demand



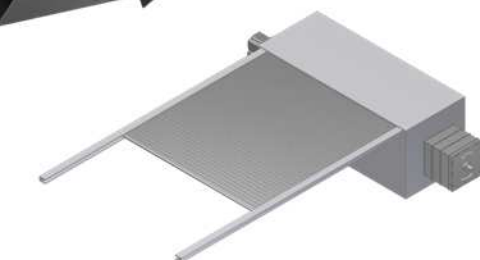
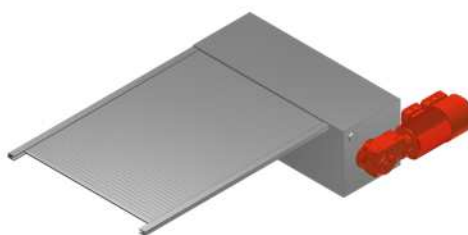
- Walkable or not walkable
- Automatically rolling up and unrolling
- Equipable with anti-slip covering (Griptape)

You can chose from the following rollup drives:

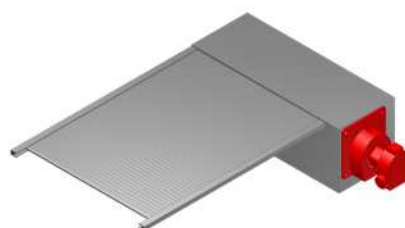
Wormway for sliding the cover in



Electric motor



Spring motor units with high torques



Air motor

Unrolling lengths up to 20 m and longer coverable supporting width, depending from walkability, up to 3m.

The flexible cover-links are made from adonised aluminiumprofiles taken from the thodacon ALC Row(compare: apron covers or main catalogue).

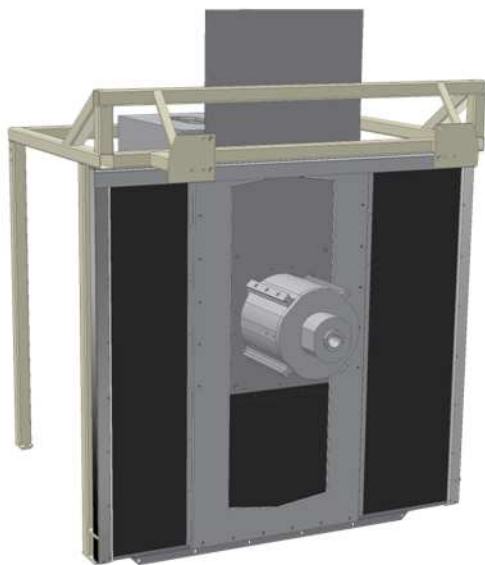
Applications

Powerfull in combination — Cover Systems for X, Y or Z Axis



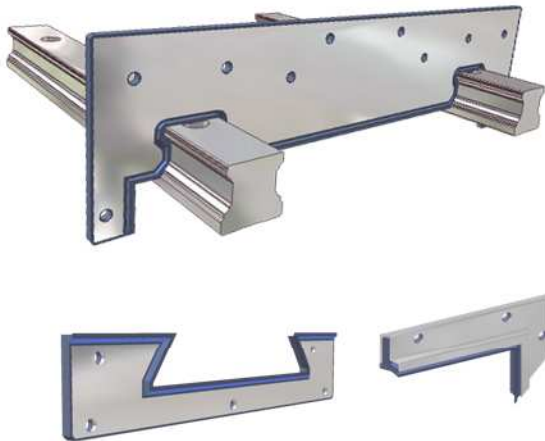
Please request for your special solution, we are pleased to work out a suitable one to your requirements.

Thodacon provides solutions based on the environment and the mechanical requirements. We provide a wide range of solutions which can meet the needs of any application, ranging from a simple bellows to a complete assembly including an enclosure, Thodacon's years of working with machine tool manufacturers gives us the knowledge to provide the most cost effective application solution.



Way Wipers

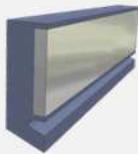
Customised solutions: Moulded Wipers according to your requests



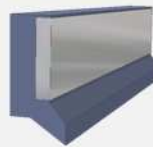
- Any special shape according to your requirement is possible
- Special range for telescopic covers (TW-Series)
- Special range of guideway wipers (MW-Series)
- Resistant to the machine tool requirements
- A big range of stock wipers available
- Long durability

MW Series

MW A



MW B



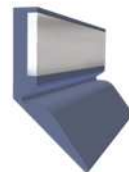
MW C



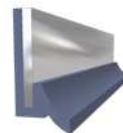
MW E



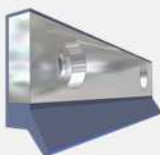
MW G



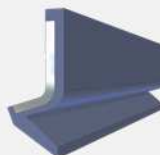
MW H



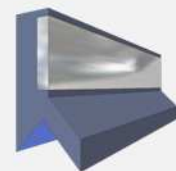
MW K



MW N



MW V



MW U3



MW U5



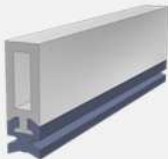
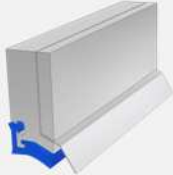
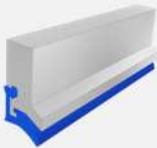
MW U7



Way Wipers

AW Series

AW



SW Series

SW

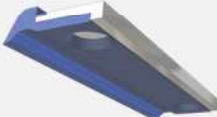


TW Series

TW A



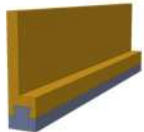
TW B



TW C



TW G



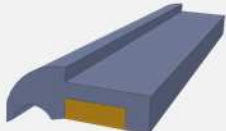
TW K



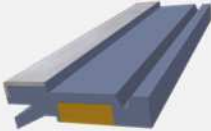
TW E



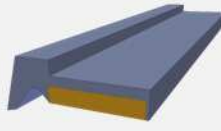
TW M1



TW M3



TW M4



TW R



Cylinder Wipers

Customised solutions: Moulded Wipers according to your requests

SCW Series



Type A



Type B

CCW Series



Type A

- Abrasion resistance, long working life.
- Simple and economical solution.
- A variety of standard ranges.
- Metal case enables the wiper fitted in the groove (Series SCW Wipers).
- Implemented imbued Capilub® self-lubrication unit (Series CCW Wipers).

ECW Series



Type A



Type B

Cylinder wipers are used for wiping out dirt, foreign particles, chips, moisture, etc. from piston rods in hydraulic and pneumatic applications, and avoid contamination of the hydraulic fluid, which would damage other components.

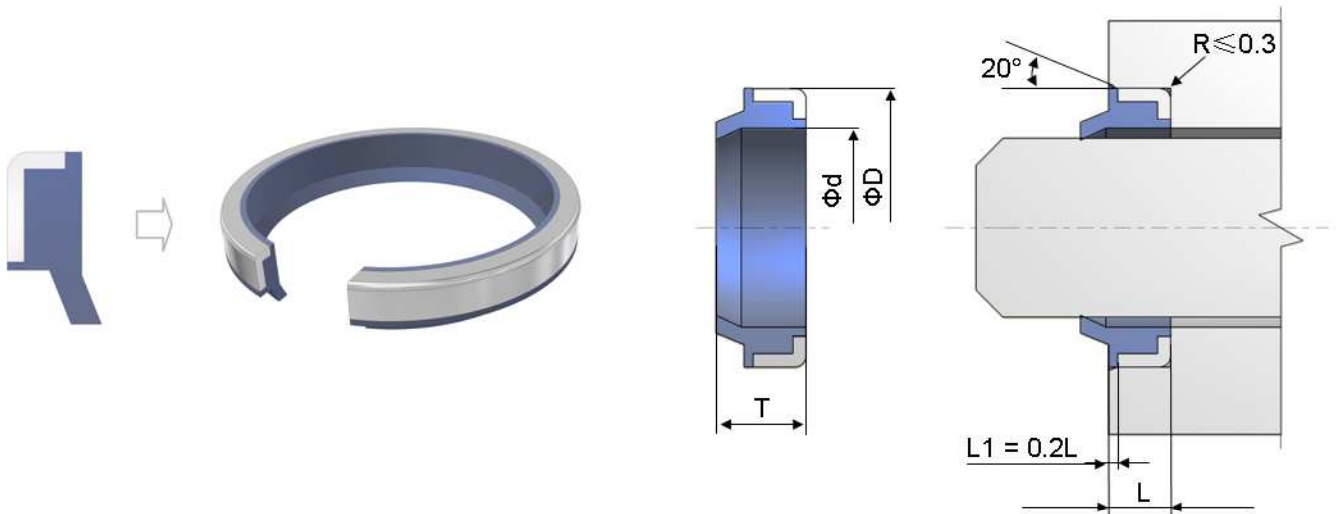
The regular elastomer compositions are NBR and FPM with a hardness of 83 A. The standard color is black. Rings to other sizes, or in special materials and colours, are manufactured to order.

Our technicians are pleased to submit you an adequate advisory service. As a matter of course we provide CAD exchange of 3-D files and make it easy to implement our parts into your design.

Even most comprehensive developments are carried out in accurate quality in the shortest possible time.



SCW A

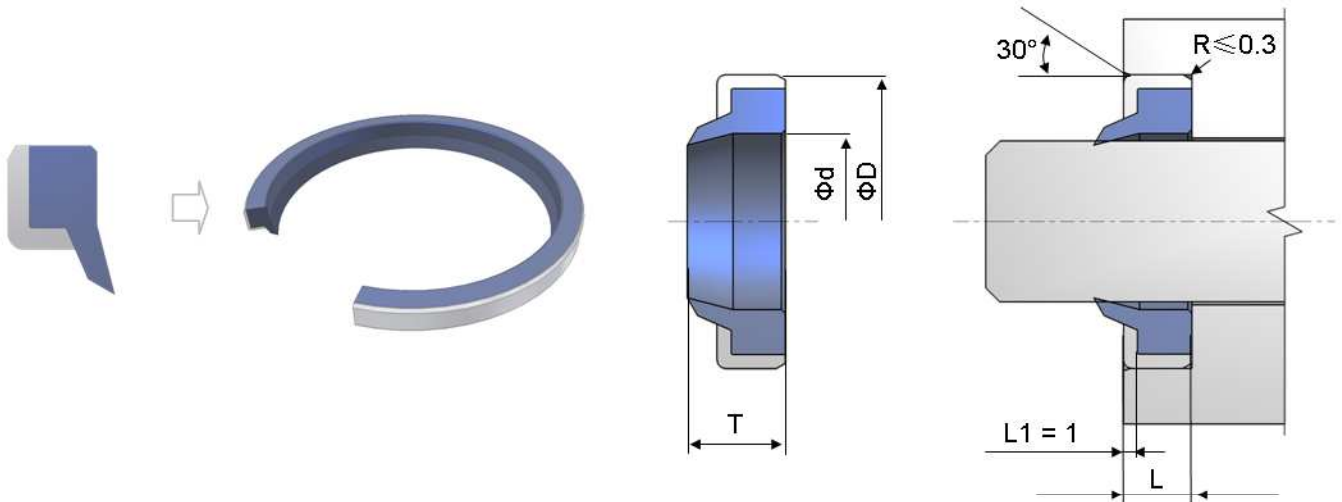


Technical Information

Type	Order No.	d	D	L	T	Elast.
SCW A 1	1032272	10	16	3	4.5	NBR
SCW A 2	1032273	10	16	3	4.5	FPM
SCW A 3	1032274	12	20	4	6	NBR
SCW A 4	1032275	12	20	4	6	FPM
SCW A 5	1032276	14	22	3	4	NBR
SCW A 6	1032277	14	22	3	4	FPM
SCW A 7	1032278	15	25	5	8	NBR
SCW A 8	1032279	15	25	5	8	FPM
SCW A 9	1032280	16	22	3	4	NBR
SCW A 10	1032281	16	22	3	4	FPM
SCW A 11	1032282	18	26	7	10	NBR
SCW A 12	1032283	18	26	7	10	FPM
SCW A 13	1032284	20	30	4	6	NBR
SCW A 14	1032285	20	30	4	6	FPM
SCW A 15	1032286	22	28	5	9	NBR

All dimensions in "mm"

SCW B

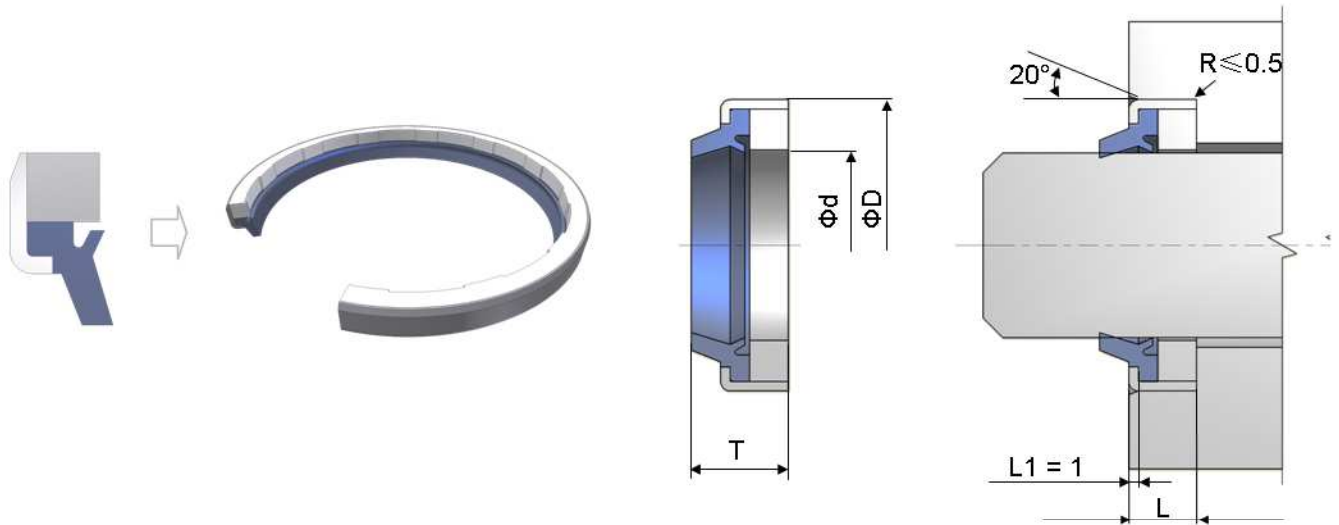


Technical Information

Type	Order No.	d	D	L	T	Elast.
SCW B 1	1035343	6.3	16	5	7	NBR
SCW B 2	1035344	6.3	16	5	7	FPM
SCW B 3	1035345	7.1	17	5	7	NBR
SCW B 4	1035346	7.1	17	5	7	FPM
SCW B 5	1035347	8	18	5	7	NBR
SCW B 6	1035348	8	18	5	7	FPM
SCW B 7	1035349	9	19	5	7	NBR
SCW B 8	1035350	9	19	5	7	FPM
SCW B 9	1035351	10	20	5	7	NBR
SCW B 10	1035352	10	20	5	7	FPM
SCW B 11	1035353	11.2	21	5	7	NBR
SCW B 12	1035354	11.2	21	5	7	FPM
SCW B 13	1035355	12.5	23	5	7	NBR
SCW B 14	1035356	12.5	23	5	7	FPM
SCW B 15	1035357	14	24	5	7	NBR

All dimensions in "mm"

CCW A

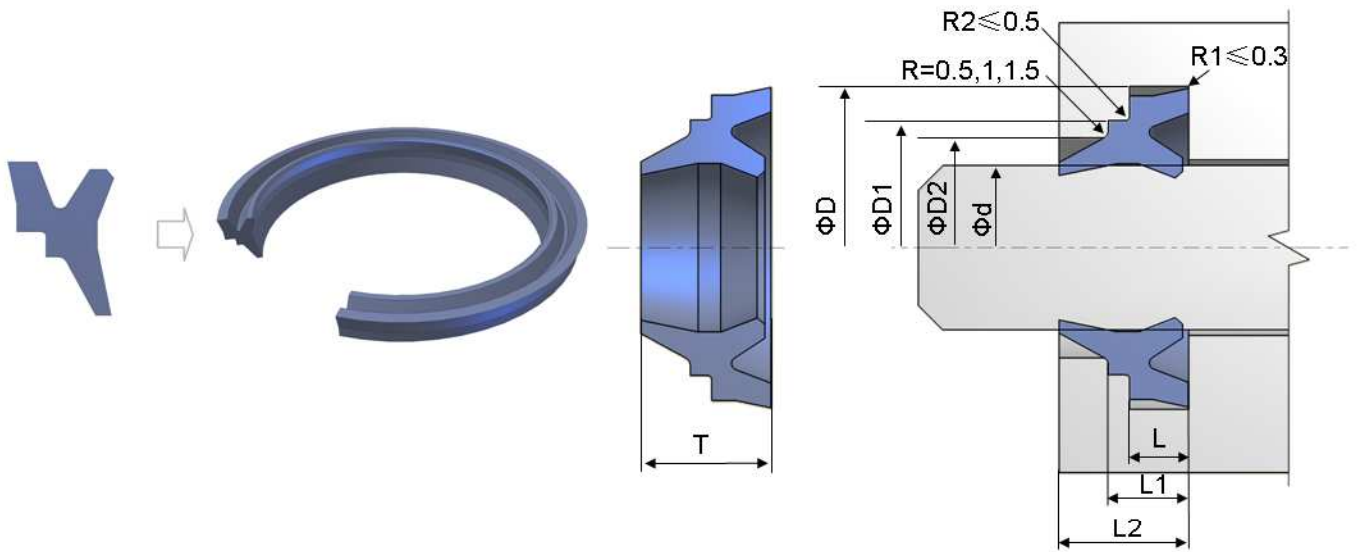


Technical Information

Type	Order No.	d	D	L	T	Elast.
CCW A 1	1033557	80	90	7	10	NBR
CCW A 2	1033558	80	90	7	10	FPM
CCW A 3	1033559	85	95	7	10	NBR
CCW A 4	1033560	85	95	7	10	FPM
CCW A 5	1033561	90	100	7	10	NBR
CCW A 6	1033562	90	100	7	10	FPM
CCW A 7	1033563	95	105	7	10	NBR
CCW A 8	1033564	95	105	7	10	FPM
CCW A 9	1033565	100	110	7	10	NBR
CCW A 10	1033566	100	110	7	10	FPM
CCW A 11	1033567	100	115	8	10	NBR
CCW A 12	1033568	100	115	8	10	FPM
CCW A 13	1033569	105	115	7	10	NBR
CCW A 14	1033570	105	115	7	10	FPM
CCW A 15	1033571	110	120	7	10	NBR

All dimensions in "mm"

ECW A

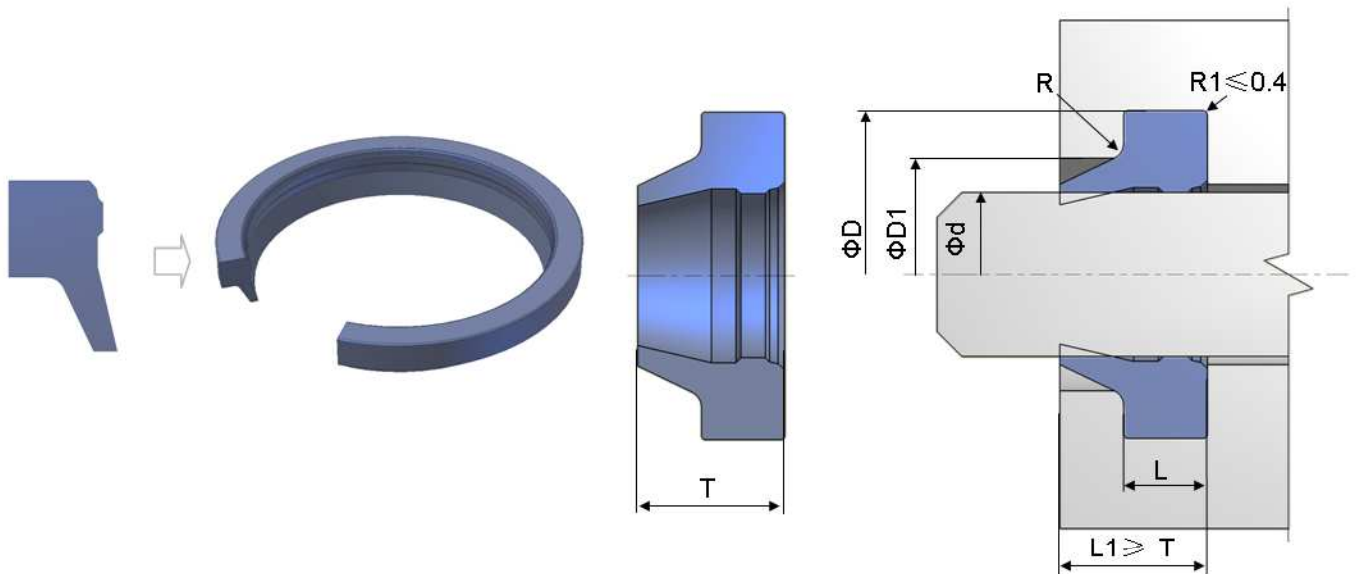


Technical Information

Type	Order No.	d	D	T	D1	D2	L	L1	L2	Elast.
ECW A 1	1033745	10	18	8	16	13.5	4	6	8	NBR
ECW A 2	1033746	10	18	8	16	13.5	4	6	8	FPM
ECW A 3	1033747	12	20	8	18	15.5	4	6	8	NBR
ECW A 4	1033748	12	20	8	18	15.5	4	6	8	FPM
ECW A 5	1033749	14	22	8	20	17.5	4	6	8	NBR
ECW A 6	1033750	14	22	8	20	17.5	4	6	8	FPM
ECW A 7	1033751	15	23	8	21	18.5	4	6	8	NBR
ECW A 8	1033752	15	23	8	21	18.5	4	6	8	FPM
ECW A 9	1033753	16	24	8	22	19.5	4	6	8	NBR
ECW A10	1033754	16	24	8	22	19.5	4	6	8	FPM
ECW A 11	1033755	18	26	8	24	21.5	4	6	8	NBR
ECW A12	1033756	18	26	8	24	21.5	4	6	8	FPM
ECW A 13	1033757	20	28	8	26	23.5	4	6	8	NBR
ECW A 14	1033758	20	28	8	26	23.5	4	6	8	FPM
ECW A 15	1033759	22	30	8	28	25.5	4	6	8	NBR

All dimensions in "mm"

ECW B



Technical Information

Type	Order No.	d	D	L	T	D1	R	Elast.
ECW B 1	1033485	16	24.6	5.3	7	19	1	NBR
ECW B 2	1033486	16	24.6	5.3	7	19	1	FPM
ECW B 3	1033487	20	28.6	5.3	7	23	1	NBR
ECW B 4	1033488	20	28.6	5.3	7	23	1	FPM
ECW B 5	1033489	24	32.6	5.3	7	27	1	NBR
ECW B 6	1033490	24	32.6	5.3	7	27	1	FPM
ECW B 7	1033491	25	33.6	5.3	7	28	1	NBR
ECW B 8	1033492	25	33.6	5.3	7	28	1	FPM
ECW B 9	1033493	28	36.6	5.3	7	31	1	NBR
ECW B 10	1033494	28	36.6	5.3	7	31	1	FPM
ECW B 11	1033495	30	38.6	5.3	7	33	1	NBR
ECW B 12	1033496	30	38.6	5.3	7	33	1	FPM
ECW B 13	1033497	32	40.6	5.3	7	35	1	NBR
ECW B 14	1033498	32	40.6	5.3	7	35	1	FPM
ECW B 15	1033499	35	43.6	5.3	7	38	1	NBR

All dimensions in "mm"

thodacon[®]
www.thodacon.com

thodacon[®]
Werkzeugmaschinenenschutz GmbH

Albert-Schalper-Str. 25
83059 Kolbermoor, Germany
Tel: +49 (0)8031-22205-71
Email: sales@thodacon.cn

thodacon[®]
Machine Tool Protection Co., Ltd.

Baojian Industrial Zone, building 1, Luoshe
Wuxi 214154, China
Tel: +86 510 8329 1518
Email: sales@thodacon.cn

- ISO 9001:2008 -
Certified Company